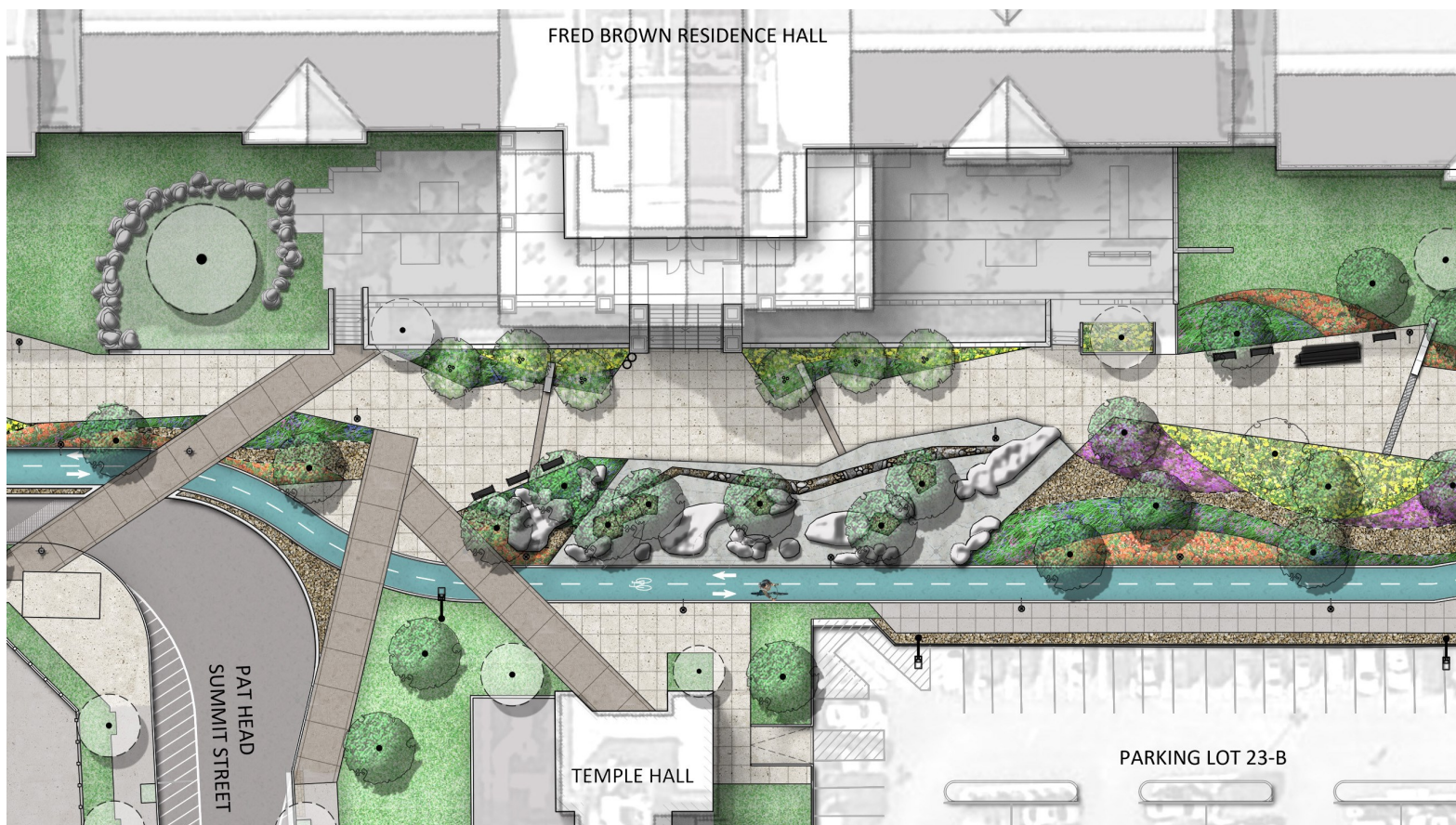


## Pedestrian Walkway Expansion permanently closes part of Andy Holt Ave



### Pedestrian Walkway Expansion

Scheduled to start the week of January 20th

The project supports the campus master plan and enhances the learning environment by creating more pedestrian-friendly campus with a unified design, improved safety, and additional green spaces.

Key features include designated bike lanes, improved stormwater control, and green spaces

Volunteer Boulevard to Pat Summitt is the best route for thru traffic.

**NOTE:** Please change directions your department or program may have online or in printed materials.

The campus maps online (UT & interactive maps) have been updated. Please make sure any map links are correct.





This service will bring students (staff & faculty) closer to the center of main campus.

**Days:** Monday – Friday

**Hours:** 8:30 am – 2:30 pm

**Frequency:** 7-8 minutes

**Note:** Does not run on administrative holidays or breaks

## Andy Holt Ave and T Bus routes impacted by water main break and expansion of Pedestrian Walkway

## T Bus changes & maps

**Closure of block of Andy Holt Ave also re-routed Hill and Late Nite bus service.**

**Do you need one or more 16 X 12 poster of the complete T Bus route? Or the NEW Ag Express route?**

Email [mbindner@utk.edu](mailto:mbindner@utk.edu)  
for materials



## Calendar for mid-January & February

- Jan 13-19** TYR Pro Series Swim Meet @ Aquatic Center (**weekdays**)
- Jan 16** 2020 Suffrage Centennial Celebration Kickoff @ Student Union 11:30 am
- Jan 17** Last day to return Fall/Spring permit for 50% credit on account
- Jan 20** **NO T BUS SERVICE—Martin Luther King Jr Day—University Closed**
- Jan 20** Lady Vols Basketball vs Alabama @ Arena 7:00 pm (**weekday**)
- Jan 21** Men's Basketball vs Ole Miss @ Arena 9:00 pm
- Jan 24** Harlem Globetrotters @ Arena 7:00 pm
- Jan 26** Lady Vols Basketball vs LSU @ Arena 1:00 pm
- Feb 1** Black Issues Conference @ Student Union 10:00 am - 4:00 pm
- Feb 1** Professional Bull Riding (PBR) Velocity Tour @ Arena 7:30 pm
- Feb 4** Faculty Appreciation Luncheon @ Student Union Ballroom 11:30 am (**weekday**)
- Feb 4** Spring Job and Internship Fair @ Arena 2:00 - 6:00 pm
- Feb 6** Lady Vols Basketball vs Miss St @ Arena 6:30 pm (**weekday**)
- Feb 8** Men's Basketball vs Kentucky @ Arena 1:00 pm
- Feb 11** Men's Basketball vs Arkansas @ Arena 7:00 pm (**weekday**)
- Feb 14** Winter Jam @ Arena 7:00 pm
- Feb 16** Lady Vols Basketball vs Texas A & M @ Arena 3:00 pm
- Feb 18** Men's Basketball vs Vanderbilt @ Arena 6:30 pm (**weekday**)
- Feb 19-20** Engineering Career Fair @ Arena (concourse) all day
- Feb 21** TN Civic Summitt @ Baker Center Auditorium all day
- Feb 21** UT Mobile Mammography @ Circle Park all day (**weekday**)
- Feb 22** Jason Aldean Concert @ Arena 7:30 pm
- Feb 23** Lady Vols Basketball vs Vanderbilt @ Arena 12:00 pm
- Feb 27** Tiffany Gill Fleming-Morrow Lecture @ Strong Hall 5:30 –7:00 pm (weekday)
- Feb 27** Lady Vols Basketball vs Ole Miss @ Arena 7:00 pm
- Feb 28** Career Day Architecture + Design @ Student Union Ballroom 10:00 am - 4:00 pm
- Feb 28** Lauren Daigle Concert @ Arena 7:30 pm
- Feb 29** Men's Basketball vs Florida @ Arena 2:00 pm

**Please note:** Baseball season starts in February and will impact the parking areas around Lindsey Nelson Stadium (GF 1-4, C1, C10, C22, G16, and S23 at Music)



## Parking lots around Thompson-Boling Arena are impacted by events

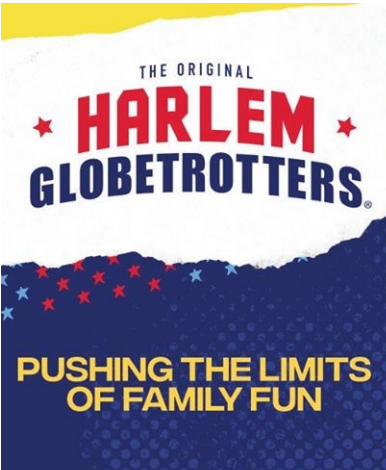
Spring brings a large number of events to campus and the lots nearest the arena convert to event parking.

Special Event signs will be placed around campus prior to basketball, concerts, speakers, career fairs, etc.

**Event parking usually starts at 4:00 pm** for many of these events (see calendar on previous page)


**Alternative parking options for students and faculty with night classes are:**

- S9 at Student Union
- S23 at Music
- G17 Terrace Ave garage
- C22 at Todd Helton & Volunteer Blvd
- Commuter and staff areas of White Ave garage
- 11th Street Garage
- C7 Enter off Terrace or Caledonia Ave



THE ORIGINAL  
**HARLEM GLOBETROTTERS**

PUSHING THE LIMITS  
OF FAMILY FUN



**JAN 24 • 7 PM**

**Harlem Globetrotters**  
**@Thompson-Boling**  
**Arena**  
**Friday Jan 24-7:00**  
**pm**

**PBR Velocity Tour**  
**@Thompson-Boling**  
**Arena**  
**Saturday Feb 1 at**  
**7:30 pm**

## BAG POLICY

### APPROVED BAGS



### PROHIBITED BAGS



## PROFESSIONAL BULL RIDERS TICKETS ON SALE NOW!



**PBR PENDLETON WHISKY VELOCITY TOUR**



**KNOXVILLE INVITATIONAL**

**FEBRUARY 1**



**THOMPSON-BOLING ARENA**

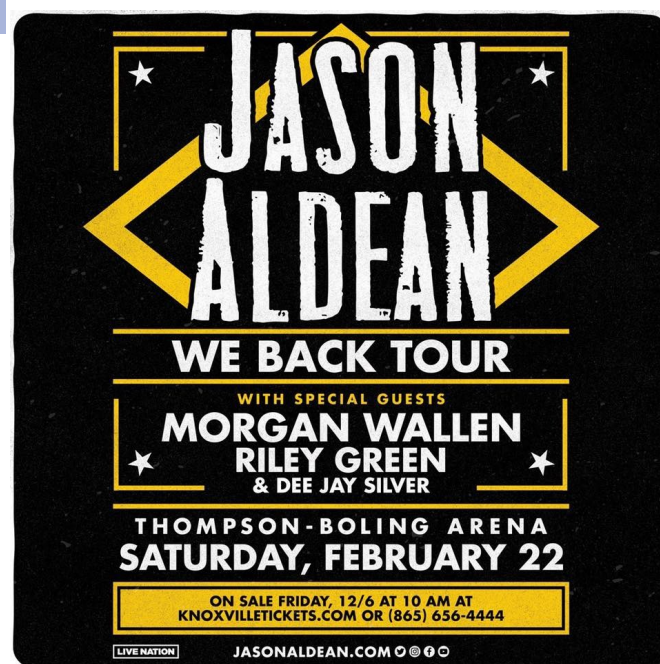
**GET TICKETS**





**WinterJam**  
**@Thompson-Boling**  
**Arena**  
**Friday Feb 14**  
**at 7:00 pm**

**Jason Aldean**  
**@Thompson-Boling Arena**  
**Saturday Feb 22 at 7:30**



**Lauren Daigle**  
**@Thompson-Boling Arena**  
**Friday Feb 28 at 7:30 pm**

### Special Event Parking

**Parking restrictions begin 4:00 pm :** Lots near the Arena convert to event parking

**Special event \$10 parking for attendees:** G3, G4, G5/30, S30A, S5, S7, S9A, S9B, G10, G16, C6, C8, C1, C22, & Circle Park

### Bonus Information:

When the Pedestrian Expansion Construction starts where will the Campfire Grill be serving lunch (Hotdog vendor)?

Pat Head Summitt St & Volunteer Blvd across from the Rock