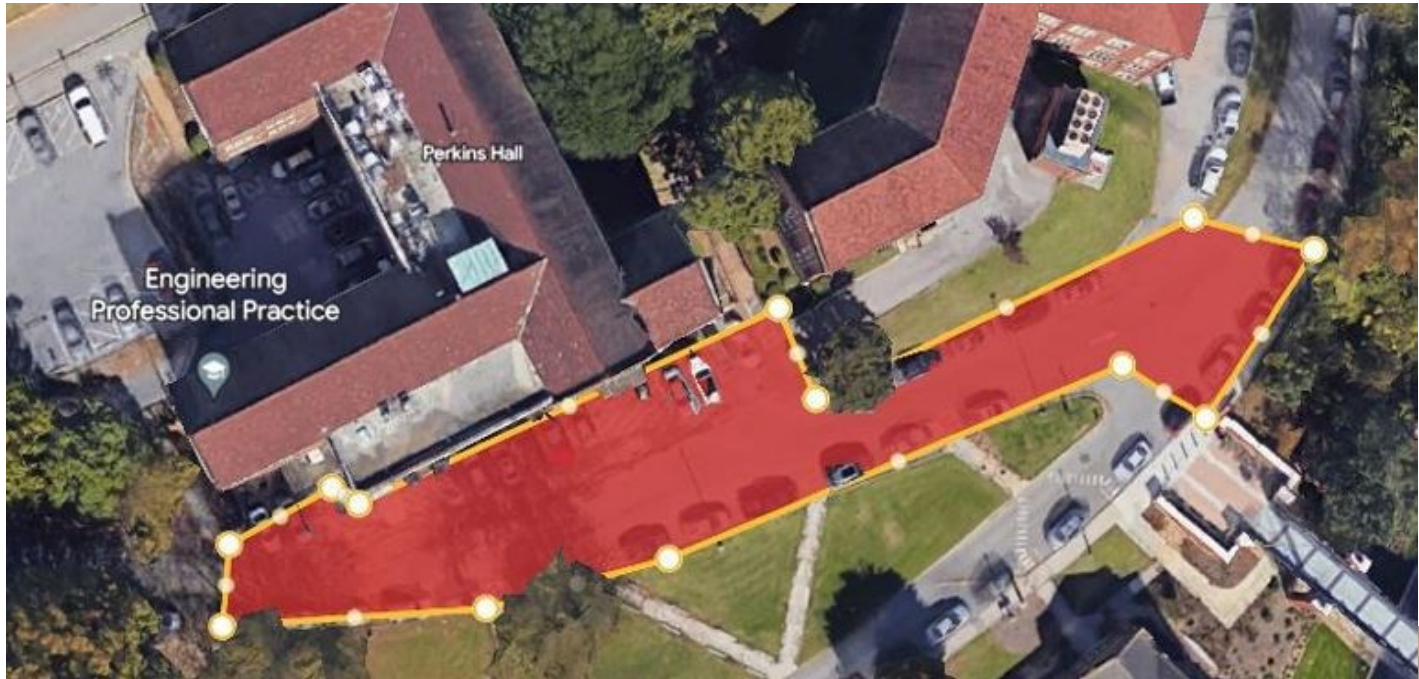


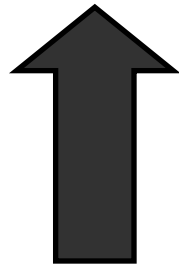
Construction/Repair Impacts Parking Announcement

Date	<i>Thu, Jul 20 - Wed, Jul 26</i>
Time	Closed starting Thu, Jul 20 at 6am Completed by Wed, Jul 26 at 7pm Contingent upon weather
Area Impacted	Lower Dr by Perkins North end of Estabrook Dr
Type	Paving
Project/Event	Summer Paving Project
Where	Lower Dr - spaces behind Perkins and the first 4 street spaces on Estabrook North of the Tickle pedestrian bridge North Estabrook Dr - all street parking north of the stairs to the pedestrian bridge across 2nd Creek We have been informed that milling will be one day, paving will be one day, and a means for pedestrians to navigate this area will be provided.
Level of Disruption	Medium disruption
Map/Image	Next page
Alternative Parking Options	Staff 7 across at Second Creek off Cumberland
Audience	S7 permit holders, Tickle College of Engineering, Arts and Sciences, and stadium construction crew
Contact	Moiria Bindner Communications & Customer Service Manager Parking & Transportation Services Email: mbindner@utk.edu Direct phone: 865-974-2846

Construction/Repair Impacts Parking Announcement



Lower Dr
behind Perkins



North Estabrook near
the Cumberland Ave
intersection at 11th St

