



PARKING & TRANSIT

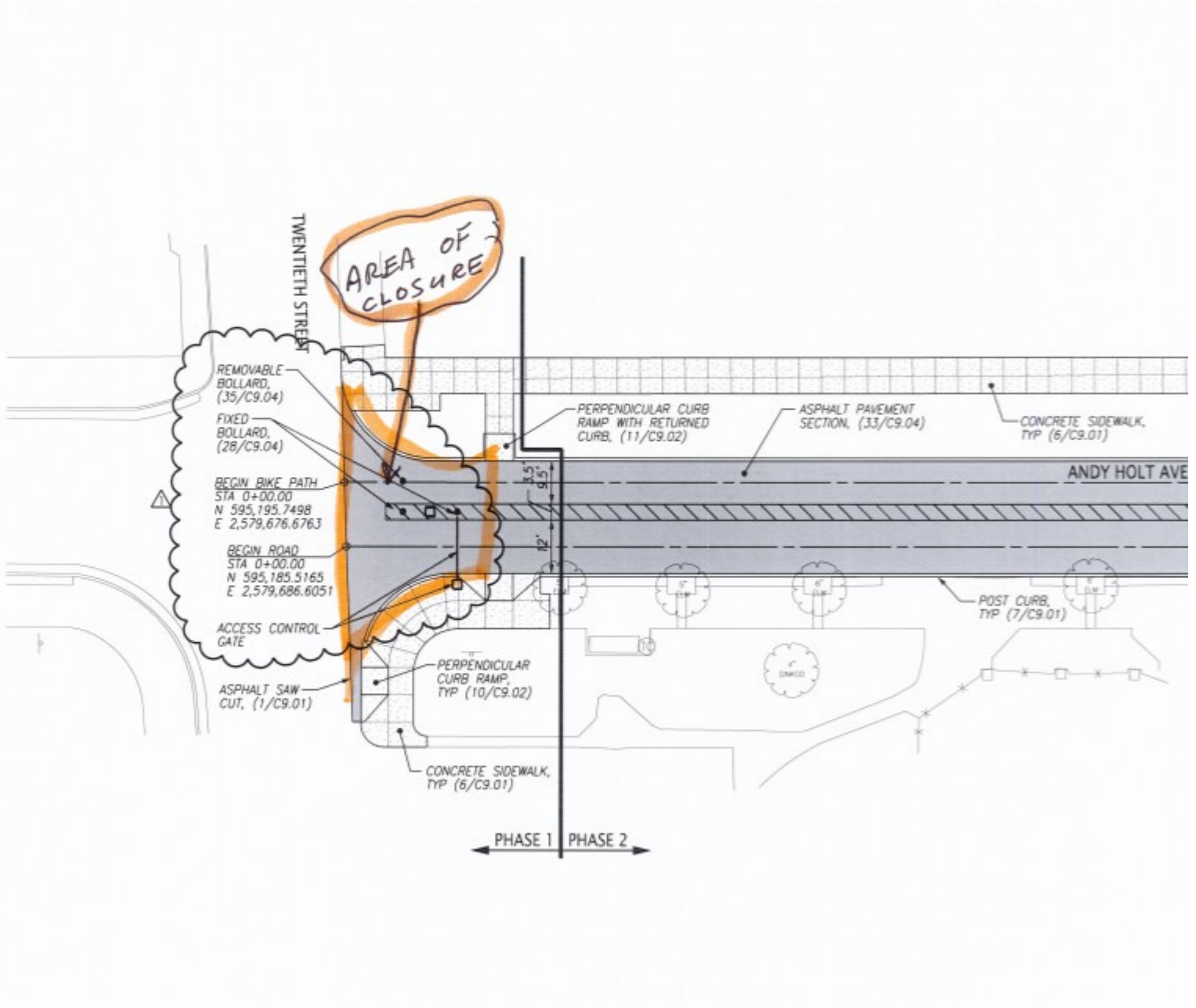
Construction/Repair Impacts Parking Announcement

Date	<i>November 30 to December 5</i>
Time	Starting at 6 am on November 30th
Area Impacted	Andy Holt Ave from 20th St to Pat Head Summitt St intersection
Type	Construction
Project/Event	Paving, curbs, and crosswalks work will temporarily CLOSE eastbound Andy Holt Ave
Where	Two areas are impacted: A. Paving across Andy Holt Ave east of 20th St where new utilities have been installed. B. Pat Head Summitt St and Andy Holt Ave intersection—new curbs, concrete cross walk, and new paving at intersection.
Level of Disruption	Medium
Map/Image	Next two pages
Alternative Parking & Mobility Options	Take Volunteer Blvd instead of Andy Holt Ave
Audience	UT community—students, staff, faculty, and visitors
Contact	Moira Bindner Communications & Customer Service Manager Parking & Transit Services Email: mbindner@utk.edu Direct phone: 865-974-2846



PARKING & TRANSIT

Construction/Repair Impacts Parking Announcement

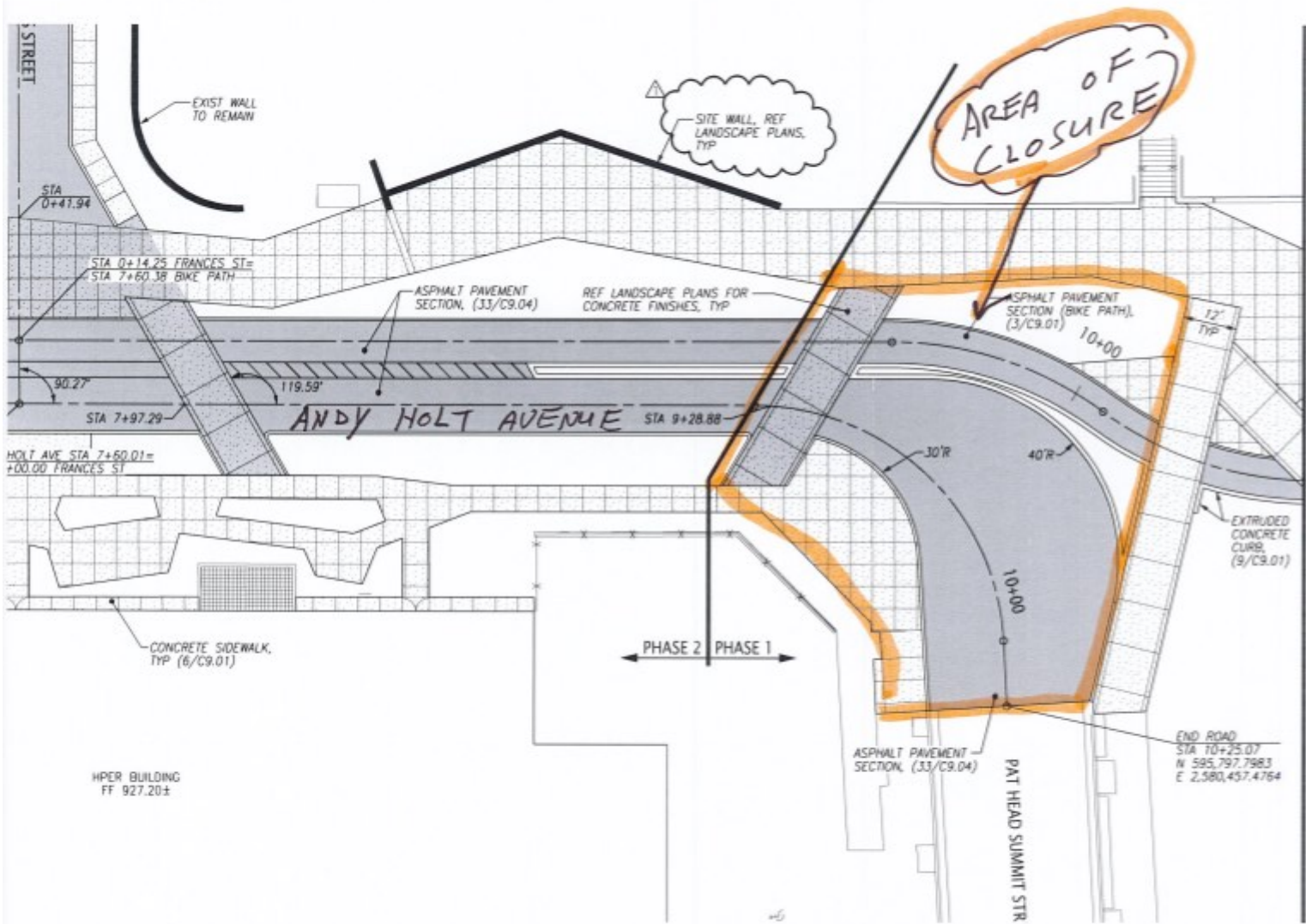


Andy Holt Ave at 20th St paving
(near TRECs)



PARKING & TRANSIT

Construction/Repair Impacts Parking Announcement



Andy Holt Ave at Pat Head Summitt St intersection paving, crosswalks, and curbs